



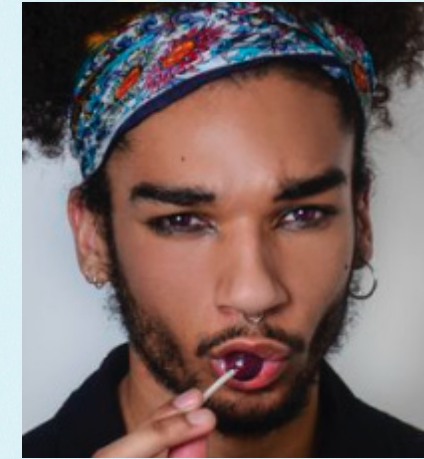
Ripley

27 year old bagel shop employee and art school dropout prone to elaborate fantasies. Ripley thinks she might be gay, but doesn't know how to begin finding out, so she lets everyone else push her on her way.



Tik

Tik is a rascal. She loves to watch drama from a safe distance, never actually involving herself. She knows how the world works but likes to stay in the present. She got her heart broken a couple years ago and was taking time heal, which is turning into unnecessary celibacy.



Beetle

Beetle is an over the top romantic. He loves love and wants himself and everyone around him to always be in love. He loves music, parties, and living in alignment with the stars. At work, he sees himself as the grown up, who just happens to do molly.